



Seychelles Island Cruise

Get hooked and explore the depths with Dive Out Loud

October 21-28/2023





Who We Are?

The newly founded project Dive Out Loud is a project born out of our love for diving and a passion for sharing the beauty of the underwater world. We specialize in liveaboard diving trips around the world and pride ourselves on creating safe and welcoming environments for divers of all levels and backgrounds. Our expert team are dedicated to providing unforgettable experiences, and we welcome all members of the LGBT+ community to join us on our adventures. Come dive out loud with us and discover the magic of the ocean!



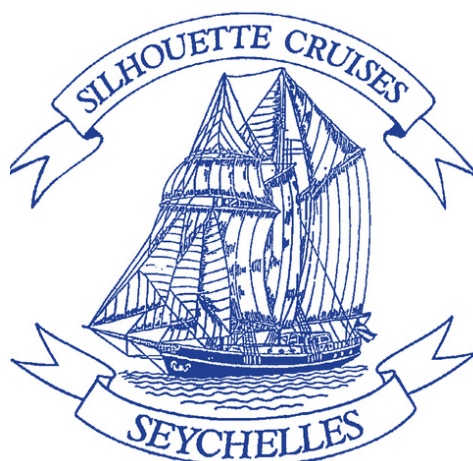


Silhouette Cruises

Silhouette Cruises is a joint venture between Seychelles and international interests, founded in 1997 with a vision to introduce a new tourism concept. This combines the romance of sail with the charm of the world's ultimate tropical islands: Seychelles.

The successful introduction of SV Sea Shell was followed by the arrival of a sister ship, SV Sea Pearl, in 1999. With a desire to introduce the same concept onboard a more comfortable platform, SY Sea Star began operating in 2004, followed by SY Sea Bird in 2007.

The directors of Silhouette Cruises are among the very few people to have visited every single island in Seychelles.



Accommodation & Dining



**Dive
Out
Loud**

Class & Comfort

Sea Bird and Sea Star each boast 9 spacious airconditioned guest cabins, all between 9-11 square meters. Each cabin features an ensuite bathroom, as well as reading lights, storage cupboard and power connections for charging computers and cameras or using other electronic devices such as hairdryers. Cabins are cleaned daily by our crew. A number of different areas onboard, from the two-tiered sundeck toward the bow, to the covered back deck and leisure area, ensure ample space for passengers to unwind.



Our Cuisine & Bar Service

Our chefs use fresh local ingredients to create an enticing blend of authentic Creole cuisine and international favourites. Each chef plans out their own menus for every cruise week, encouraging diverse and creative creations for every meal. Our stewardesses are always at the ready to serve drinks from our bar, be it for an afternoon refreshment, an aperitif at sunset or a glass of wine with dinner. However, in order to create an atmosphere in which our guests can feel at home onboard, we also offer self-service at our bar - guests are welcome to help themselves to drinks from the refrigerator at the bar by simply marking down their selections to be added to their bill.





Our Cruise Service Concept:

The cooperation between Silhouette Cruises and Dive Out Loud is what sets us apart from most smallship cruises and other diving trips, our exclusive trip to Seychelles awaits the LGBTQ+ community. Immerse yourself in the warm hospitality, authentic Creole cuisine, and relaxed atmosphere onboard. The intimate group of maximum 18 participants ensures a personalized journey and creates a perfect environment for making new friends, bonding, and sharing unforgettable moments. Alongside Silhouette Cruises crew, you'll enjoy special activities that enhance the sense of community, from group dives to beach barbecues, island explorations and cocktails during sunset. Sea Bird & Sea Star are each hosted by a crew of 9, maintaining a crew-to-guest ratio of at least 1-to-2, even at maximum occupancy. The team onboard includes a captain, engineer, deckhands, stewardesses, dive instructor, and talented chef, ensures your comfort and safety throughout the journey. Discover breathtaking landscapes, vibrant underwater wonders, and create lifelong memories on this extraordinary adventure designed exclusively for you.





Diving In Seychelles

The Seychelles inner island archipelago rests on a plateau that broke off from the super-continent Gondwanaland millions of years ago - the remnants of a submerged granite mountain range. This unique geological phenomenon has resulted in stunning flora and fauna both above and beneath the surface. Most of the dive sites we'll visit feature large granite rock formations that create different passages and caves. These are home to a rich population of tropical fish, large numbers of pelagic species such as sharks, barracudas, jacks and tunas as well as rays and turtles.

Some of the dives start and end directly from the boat's large dive platform that reaches to the sea level and has a comfortable ladder. Other dives take place from tenders. The crew will load the dinghies with dive tanks and weight belts and divers come onboard with their fins, masks and cameras. Most dive sites are within a short ride from the anchorage point of the boat. Diving on our vessels A PADI dive instructor is based on board at all times. With the assistance of the crew he takes care of all the divers' needs above and below the water. Safety and emergency equipment is located onboard according to the PADI dive resorts requirements. Divers will find onboard facilities for storing their equipment, as well as areas for preparing their equipment/cameras and other sensitive gear. Facilities for rinsing the equipment with fresh water and protecting it from the sun are also available. Most dives in the inner islands are between the depths of 8-20 meters, although some of the sites on our diving safari tend to be a little deeper. The sea is typically calm, offering visibility of up to 30 meters, while at the same time allowing us to visit open-sea dive sites that may not be accessible in other times of the year. Water temperatures can reach up to 30 degrees Celsius at its warmest, which is what divers can expect during our safari.

Sea, Sport & Activities

There are numerous opportunities throughout the cruise to enjoy snorkelling, kayaking, bottom-line fishing and standup paddle boarding (SUP) - all of which are offered on a complimentary basis including the equipment. Each day onboard presents a new opportunity to explore isolated bays and coves, colourful marine parks, and protected nature reserves or uninhabited islands. Spotting the incredibly rare Magpie Robin and other endemic birds, visiting the UNESCO World Heritage Site of Vallée de Mai, or getting up close and personal with a giant tortoise, are just a few of the many special experiences that await on the islands we visit.



Itinerary

Days 1-4



**Dive
Out
Loud**

Day 1 - Saturday

Diving & Crossing

Embarkation at the Inter-Island Quay at 1030hrs, followed by the Captain's welcome briefing. Depart Port Victoria at 1200hrs, sailing from Mahé to a late afternoon anchorage at Round Island, just off the isle of Praslin. In the evening, introduce yourself to Creole cuisine with a **welcome barbecue dinner onboard**.

Day 2 - Sunday

Diving & Visit to Vallee de Mai, Praslin

Sail to Praslin, Seychelles' second-largest inhabited island, for disembarkation to the famous World Heritage Site, the Vallee de Mai Nature Reserve. This ancient forest is home to the curiously shaped double coconut, the coco de mer, as well as the Black Parrot, unique to Praslin. Explore the valley's eerie pathways beneath its canopy of massive palms, before returning onboard for afternoon opportunities to dive, snorkel or enjoy other water sports. Unwind and connect with fellow travelers over delightful **sunset cocktails**.

Day 3 - Monday

Diving & Visit to La Digue

Sail to La Digue, a sleepy island community where ox-carts and bicycles still remain the most common mode of transportation throughout the island. La Digue is home to the endemic Seychelles Paradise Flycatcher, and is perhaps most famous for its massive granite boulder formations at Anse Source d'Argent, which is thought to be the most photographed beach on earth. Explore the island, perhaps stopping by Union Estate, a sprawling network of traditional island activities, including a copra mill, vanilla plantation, and shipyard. In the evening, join us for a **special movie night**.

Day 4 - Tuesday

Diving & Island visit (visit to Sisters is for non-divers)

The vessel sails toward Grande Soeur and Petite Soeur (the Sisters). The waters surrounding these two uninhabited private islands provide excellent diving, meanwhile non-diver guests will have the opportunity to visit the island. In the afternoon, visit Coco Island, one of Seychelles' tiny granite jewels, a fantastic spot for snorkeling within a kaleidoscope of tropical fish. As the evening approaches, get ready for a magical **Glow Night Dinner onboard**. Experience a captivating ambiance as the boat transforms into a luminous spectacle.





Itinerary

Days 5-8



**Dive
Out
Loud**

Day 5 - Wednesday

Diving & Visit to Aride

Sail to Booby Island for a morning of diving and water sports. After lunch, sail to Aride Island, a globally important nature reserve with more native bird species than any other island, including five endemics and the world's largest population of 3 species (Lesser Noddy, Audubon's Shearwater and Seychelles Warbler). The nature trail leads to a spectacular cliff-top view with the largest frigatebird roost outside of Aldabra. Aride is the only natural location in the world for Wright's Gardenia and 400 species of fish have been recorded around the island. End the day with a fun-filled **game night onboard**, where you can gather with for friendly competition and laughter.

Day 6 - Thursday

Diving & Visit to Curieuse, St. Pierre

Disembark at Curieuse for a visit of this virtually uninhabited island. Experience the island's vast mangrove forests and its giant tortoise farm, along with the historic ruins of this former leper colony. After a barbecue lunch on the island, enjoy an array of water sports or simply relax and enjoy the island's beautiful beach and turquoise waters. In the evening, join us for a glamorous **white gala night**, where you can dress to impress and dance the night away.

Day 7 - Friday

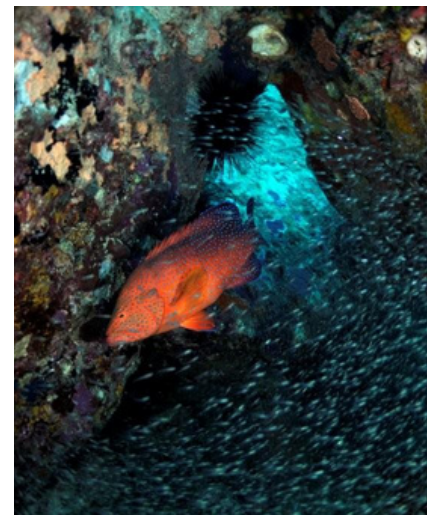
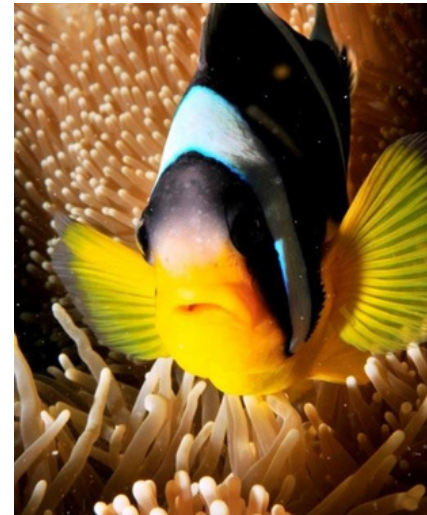
Diving & Crossing

After breakfast, enjoy a leisurely sail back towards Mahé, with a last stop at Ile Seche for more diving/ or snorkeling, followed by a **barbecue**. As the sun sets on this remarkable journey, join us for a spectacular **Farewell Party**. Celebrate the incredible experiences shared, the friendships made, and the memories created during your time onboard. Dance, laugh, and raise a toast to the unforgettable moments that will forever be cherished. Let the night be filled with joy and camaraderie as we bid farewell to an extraordinary adventure in style. The vessel then sails into Port Victoria for an overnight stay.

Day 8 - Saturday

Disembarkation at 08.30am at Inter Island Quay, Mahé.

*For the well-being and overall enjoyment of guests, adjustments to the itinerary and/or the dive sites visited may be necessary, in the event of certain weather conditions or other factors. Any such changes are at the discretion of the captain







Facilities & Amenities

- Spacious decks and upper sun deck
- Covered back deck with table for open-air dining
- 2 deck showers
- Air conditioning in all interiors (cabins, dining salon & lounge/bar)
- Bottled water, soft drinks, beer, wine and spirits are all available for purchase
- Laundry on request (additional charge)
- TV, DVD, stereo in main salon


Overnight Capacity:

- Sea Bird is licensed for a maximum of 22 passengers on overnight stay plus 10 crew.
- There are 9 air-conditioned ensuite cabins

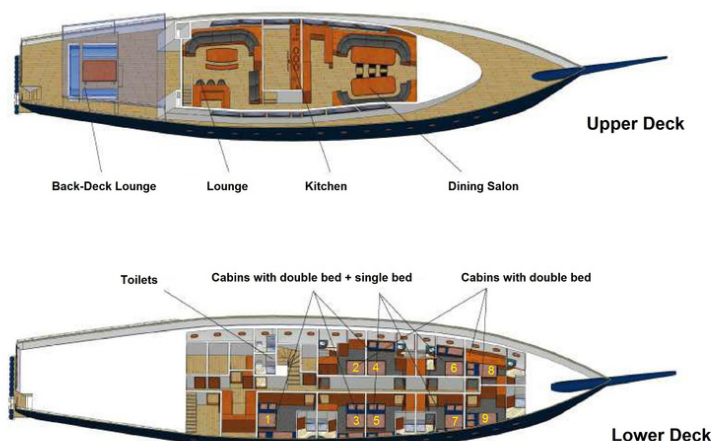
Electricity:

- Electrical outlets are conveniently located in all guest cabins as well as in the salons, using 220V power, with European two prong, round pin plugs



TYPE OF VESSEL	2-Mast Custom Built Motorised Schooner
BUILT	2000
SAIL AREA	ca.500sqm
LENGTH	42m
DIMENSIONS	42 x 8.5 x 3.20m
DRAFT	3.2m
BEAM	8.5m
BUILD	Welded Steel
DISPLACEMENT	200 tons
MAIN ENGINE	2 x 575 HP Caterpillar
SPEED OF ENGINE	9 knots
ECHO SOUNDER	JRC
FISH FINDER	JRC
GPS	JRC
RADAR	JRC
TENDER BOAT	6m Mini Mahe 55 hp
ELECTRICITY	380V, 220V, 24V 

SY Sea Bird





Facilities & Amenities

- Spacious decks and upper sun deck
- Covered back deck with table for open-air dining
- 2 deck showers
- Air conditioning in all interiors (cabins, dining salon & lounge/bar)
- Bottled water, soft drinks, beer, wine and spirits are all available for purchase
- Laundry on request (additional charge)
- TV, DVD, stereo in main salon


Overnight Capacity:

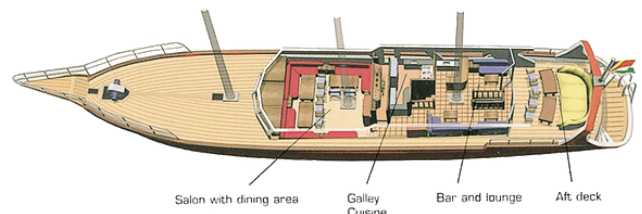
- Sea Star licensed for a maximum of 22 passengers on overnight stay plus 10 crew.
- There are 9 air-conditioned ensuite cabins

Electricity:

- Electrical outlets are conveniently located in all guest cabins as well as in the salons, using 220V power, with European two prong, round pin plugs



TYPE OF VESSEL	3-Mast Custom Built Motorised Schooner
BUILT	2002
SAIL AREA	ca.500sqm
LENGTH	40m
DIMENSIONS	40 x 8.2 x 2.40m
DRAFT	2.40m
BEAM	8.2m
BUILD	Welded Steel
DISPLACEMENT	200 tons
MAIN ENGINE	2 x 575 HP Iveco
SPEED OF ENGINE	9 knots
ECHO SOUNDER	JRC
FISH FINDER	JRC
GPS	JRC
RADAR	JRC
TENDER BOAT	6m Mini Mahe 55 hp
ELECTRICITY	380V, 220V, 24V 



Honeymoon cove cabin with double bed Cabin with double bed Cabin with double bed + single bed

